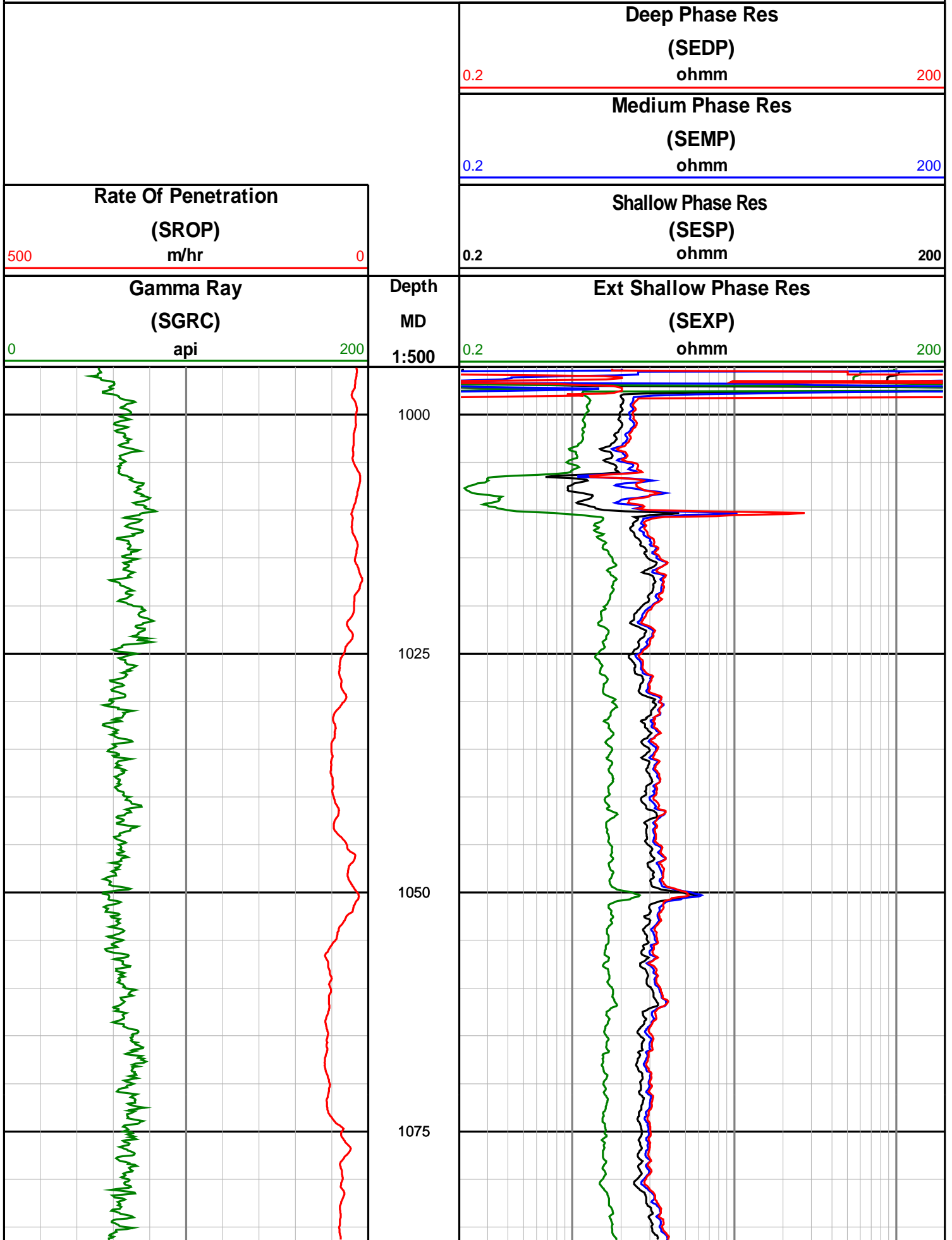
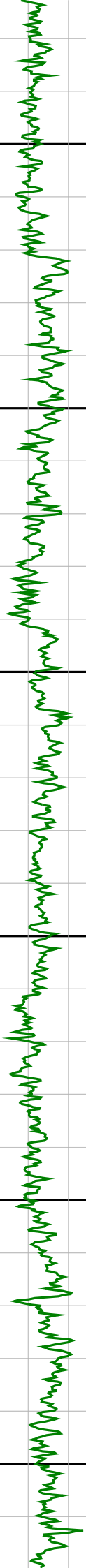


Anzon Australia Ltd

Basker-4

Recorded LWD Log (Permanent Datum - LAT)





1100

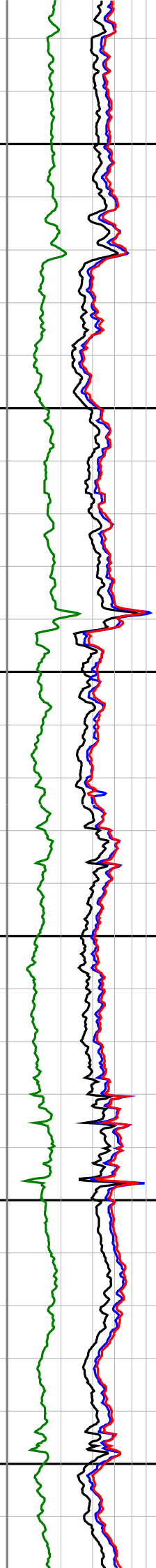
1125

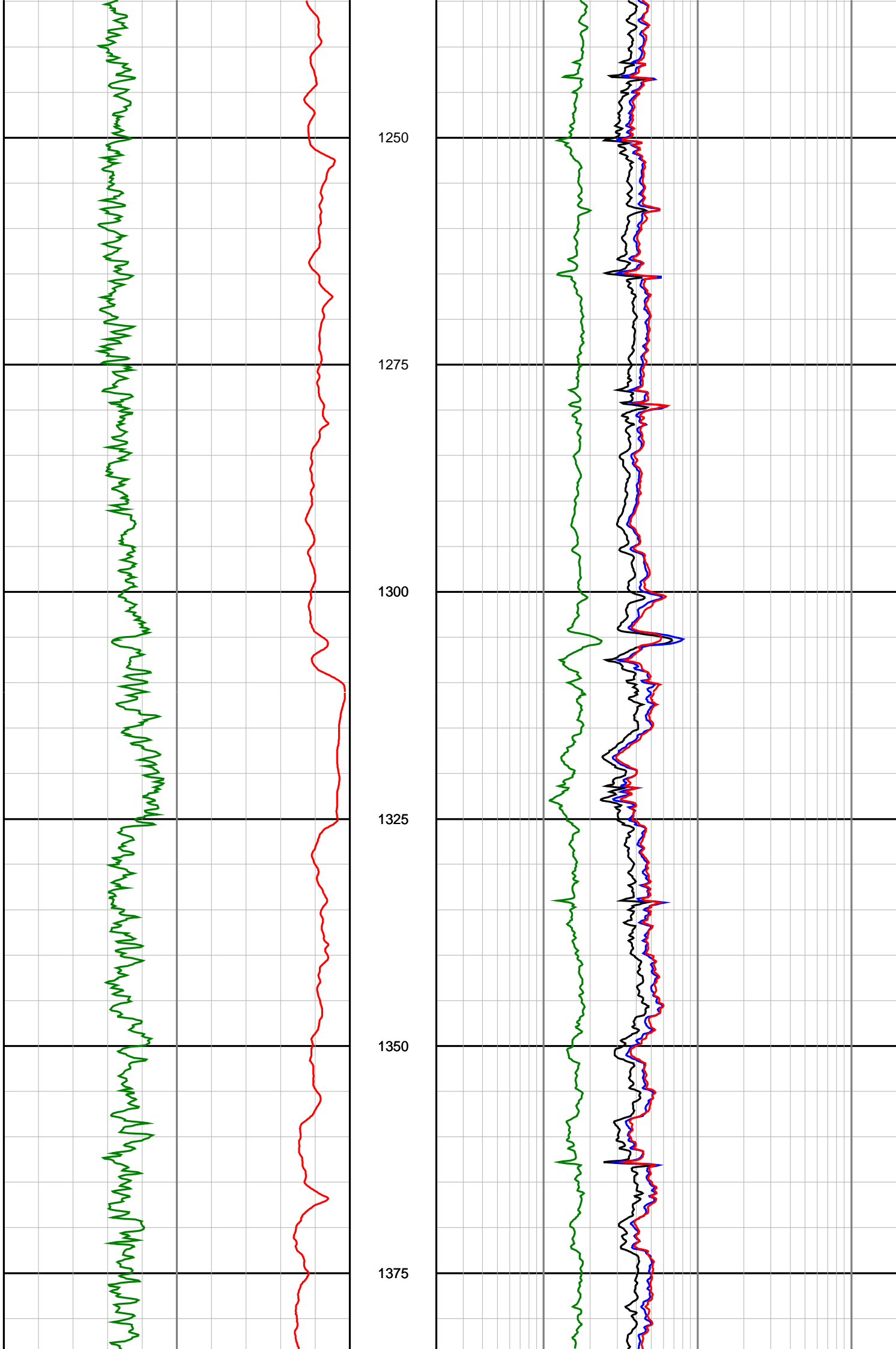
1150

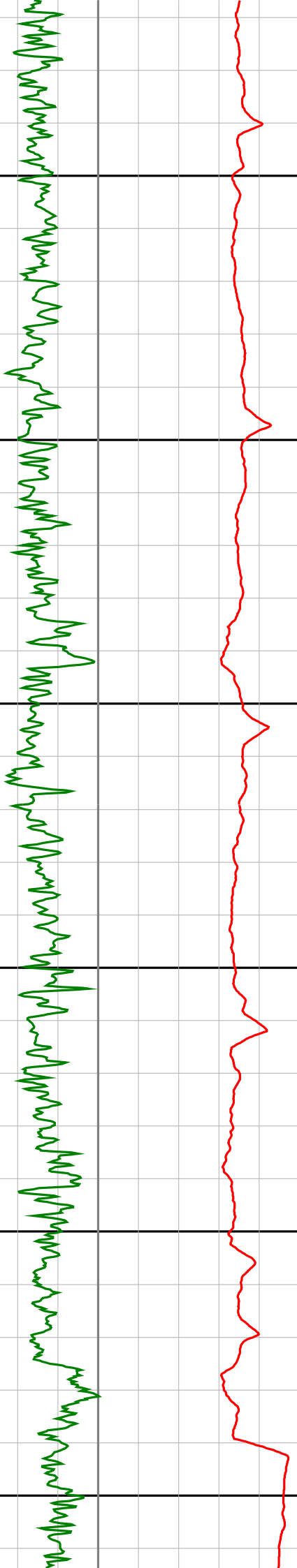
1175

1200

1225







1400

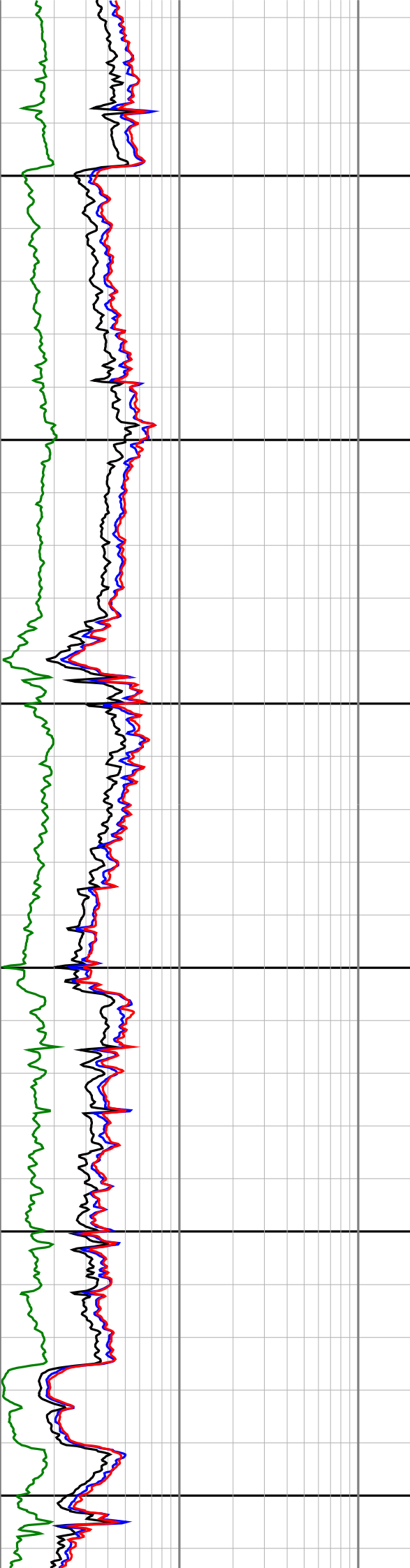
1425

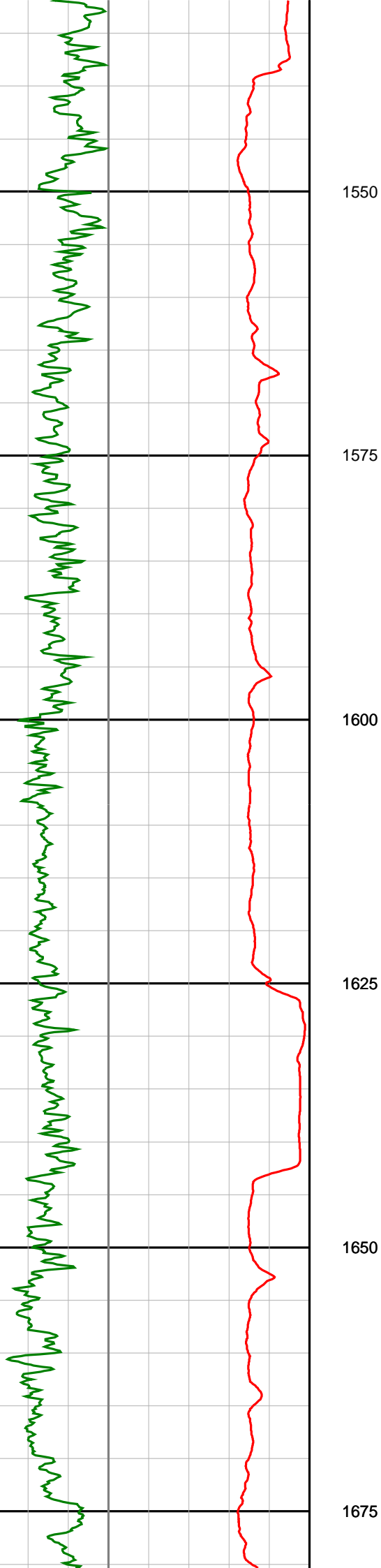
1450

1475

1500

1525





1550

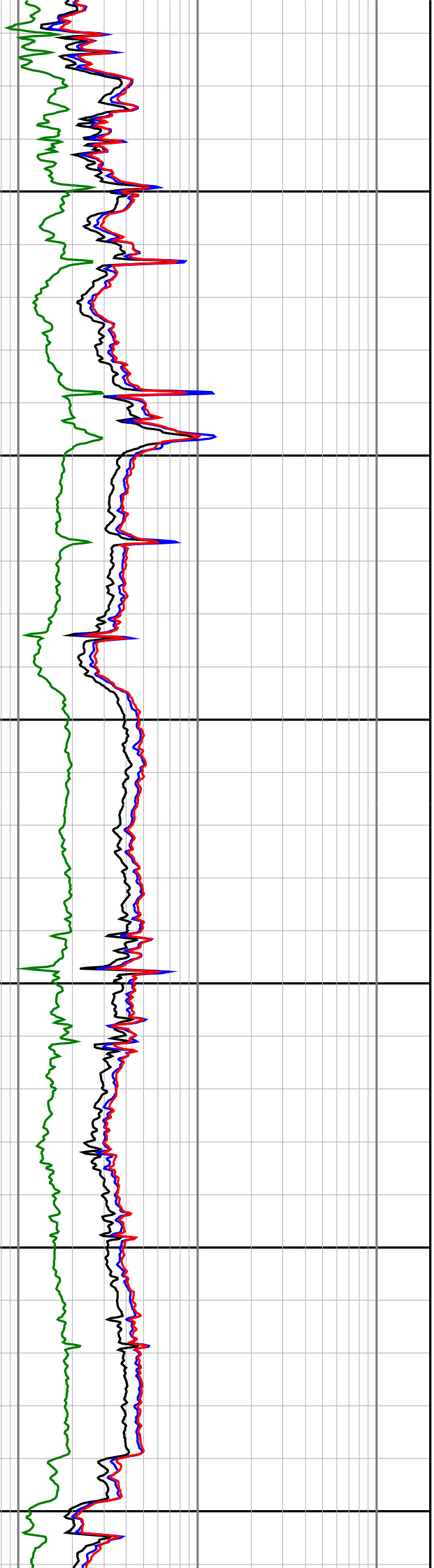
1575

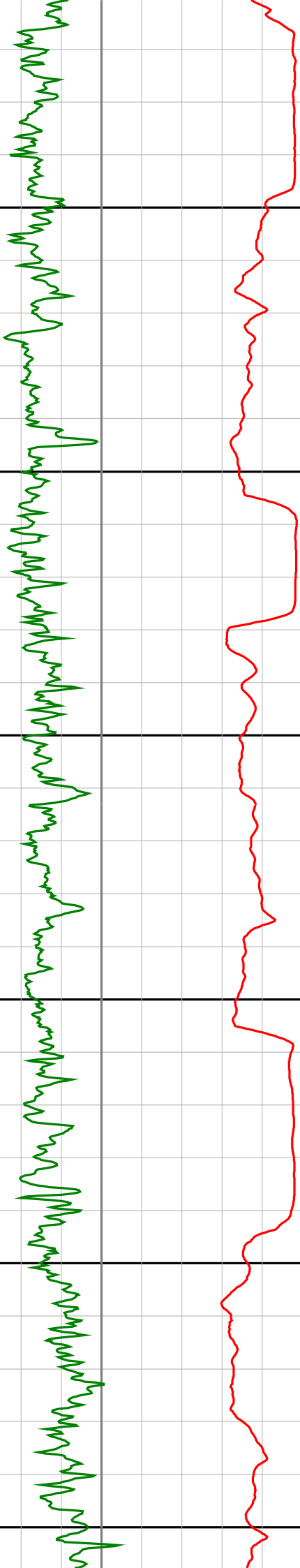
1600

1625

1650

1675





1700

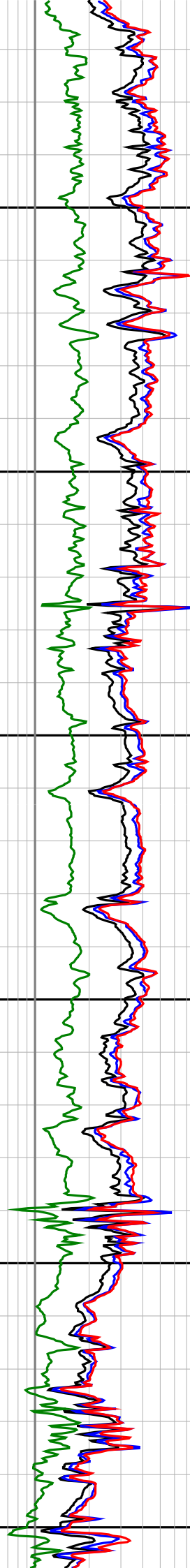
1725

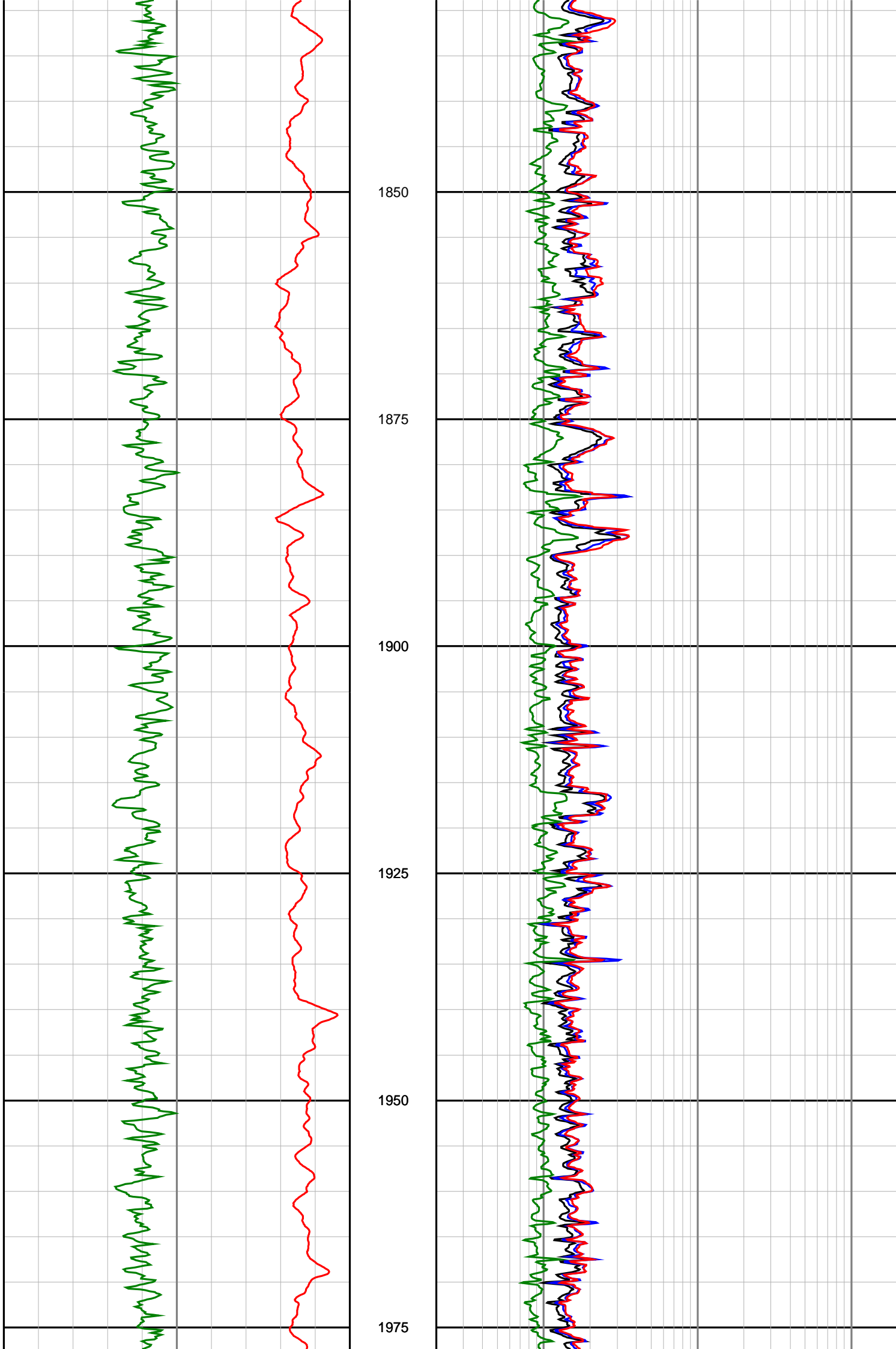
1750

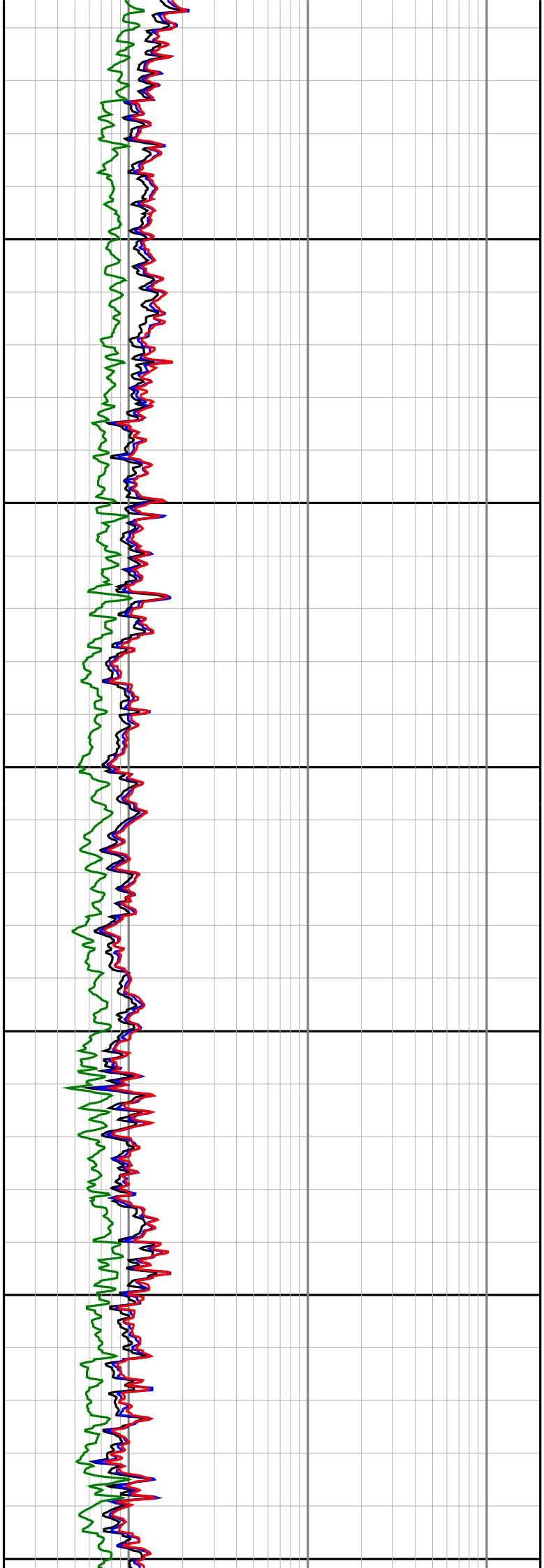
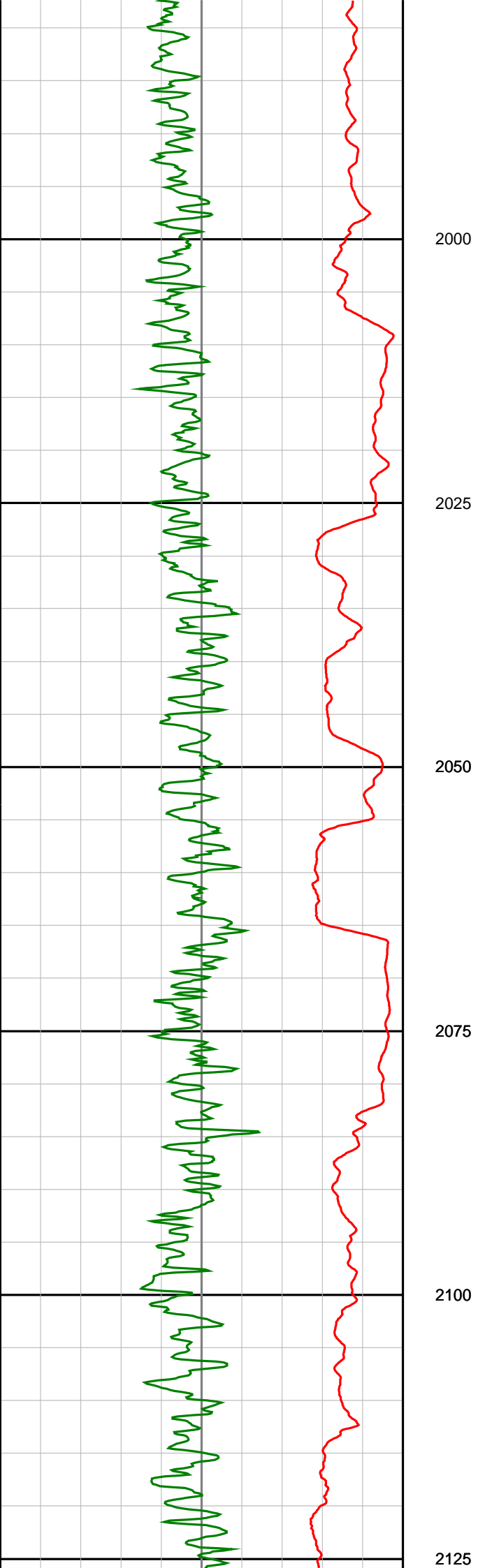
1775

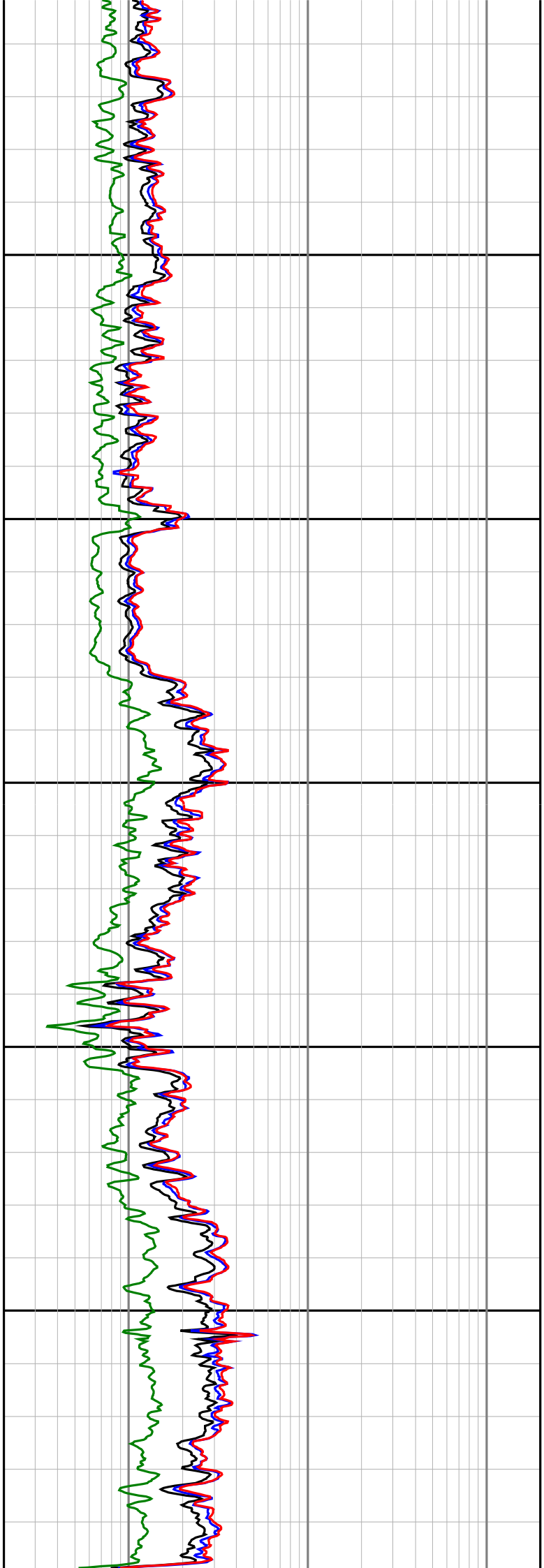
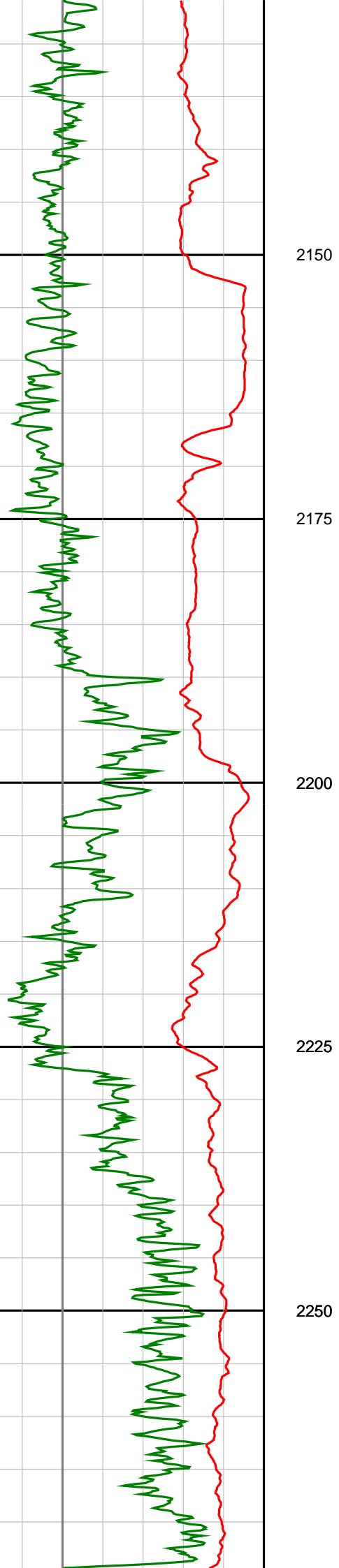
1800

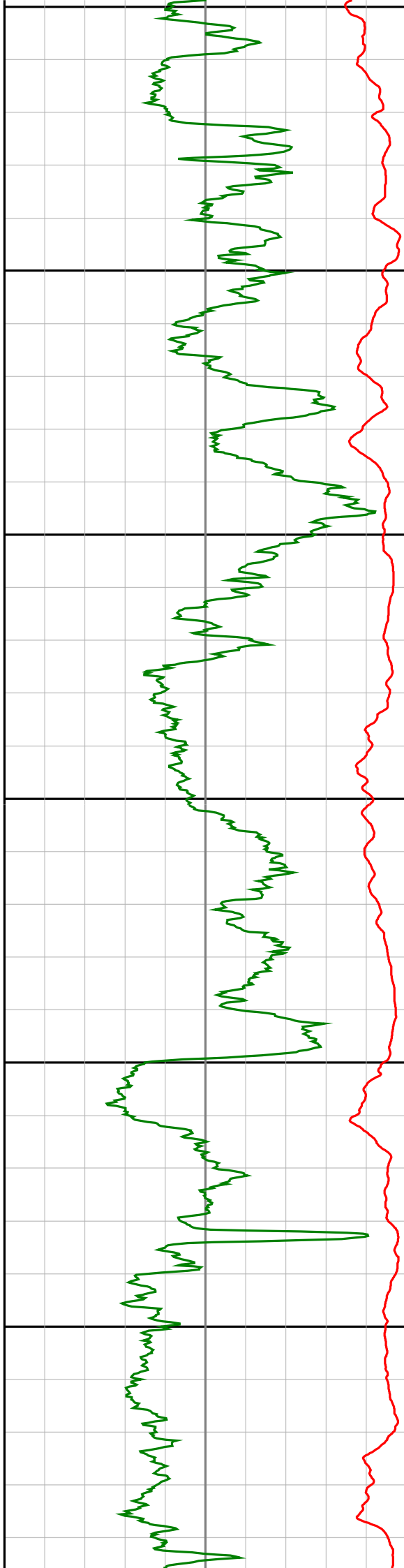
1825











2275

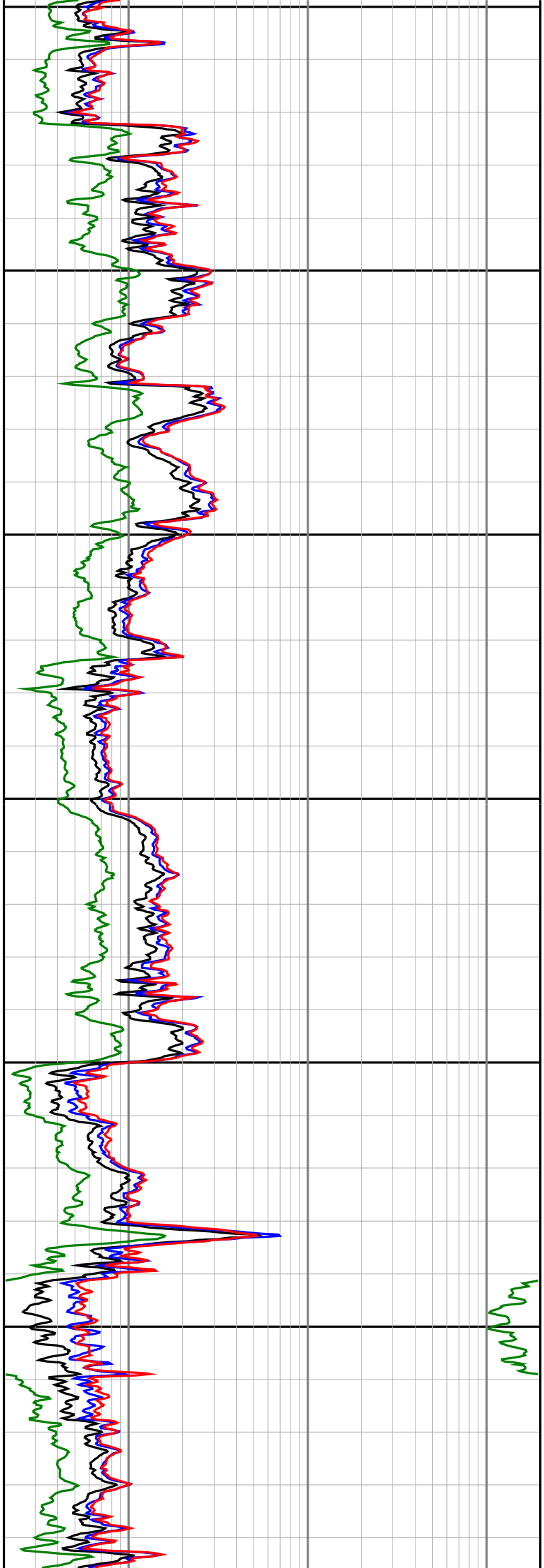
2300

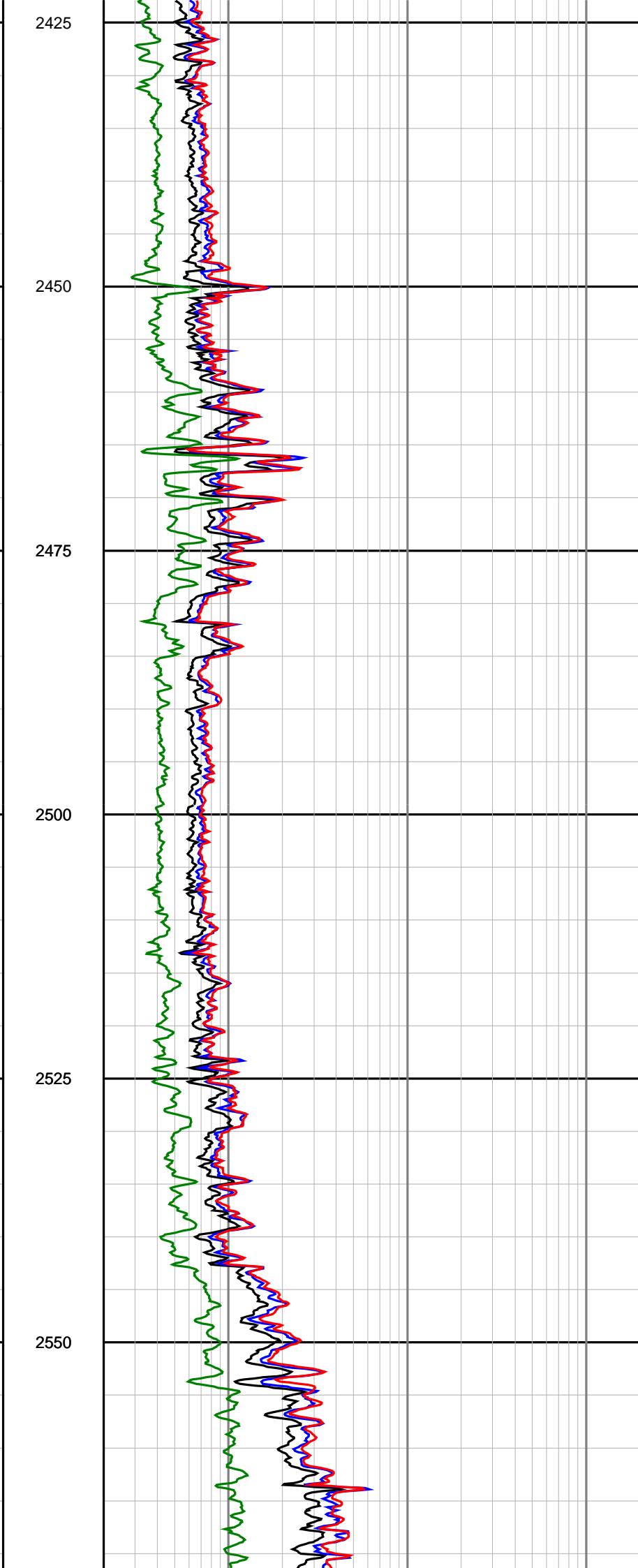
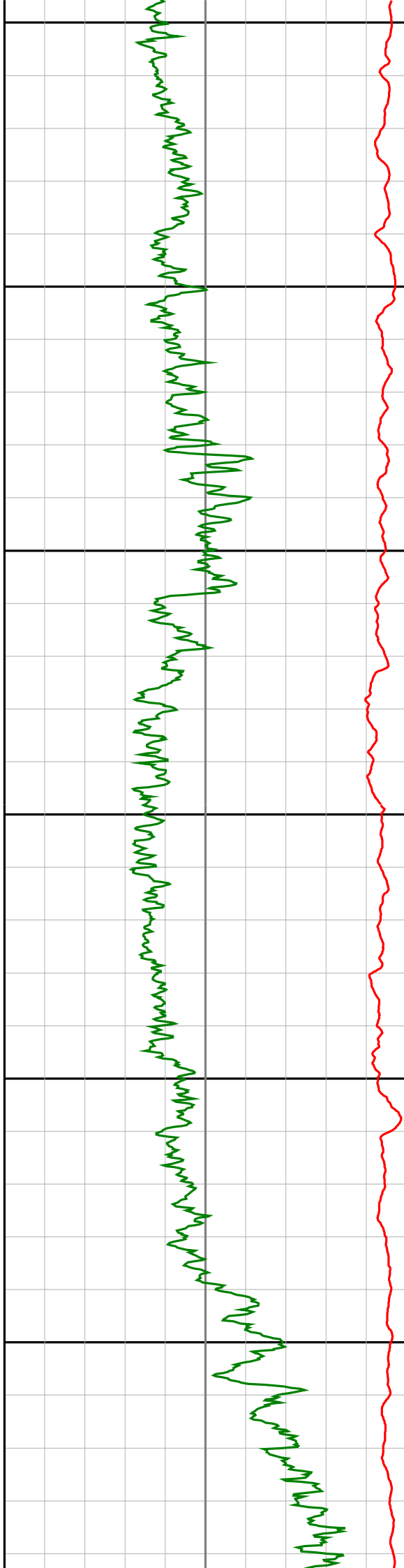
2325

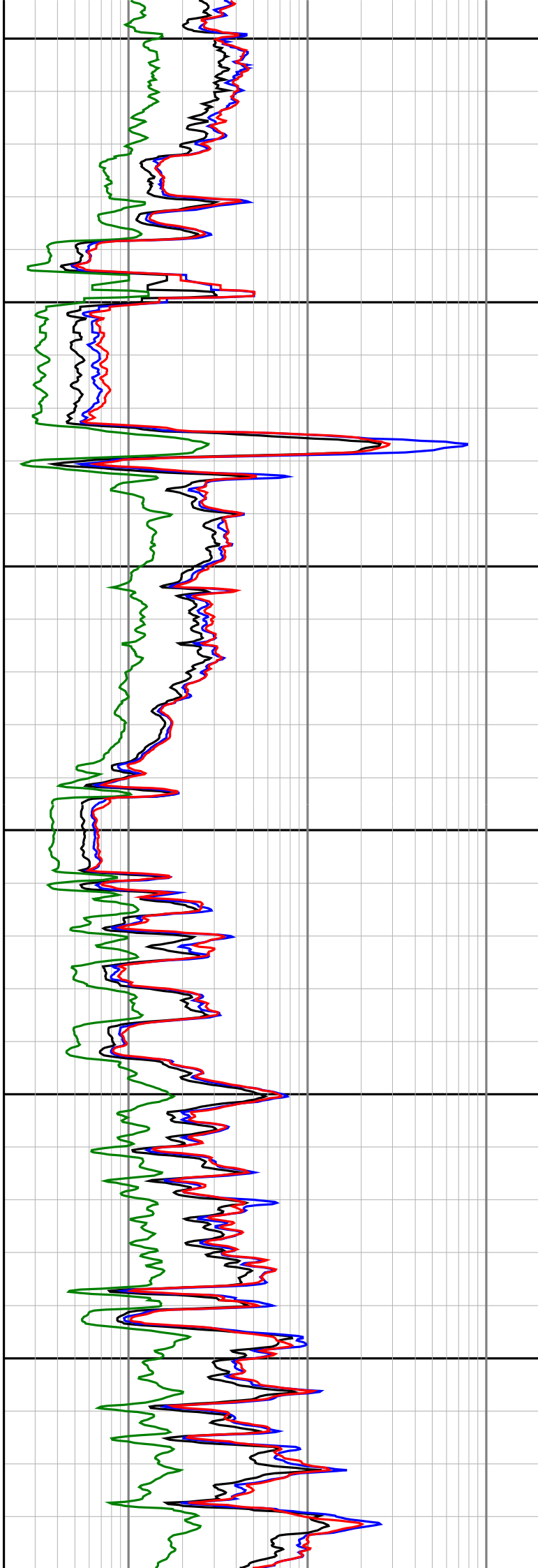
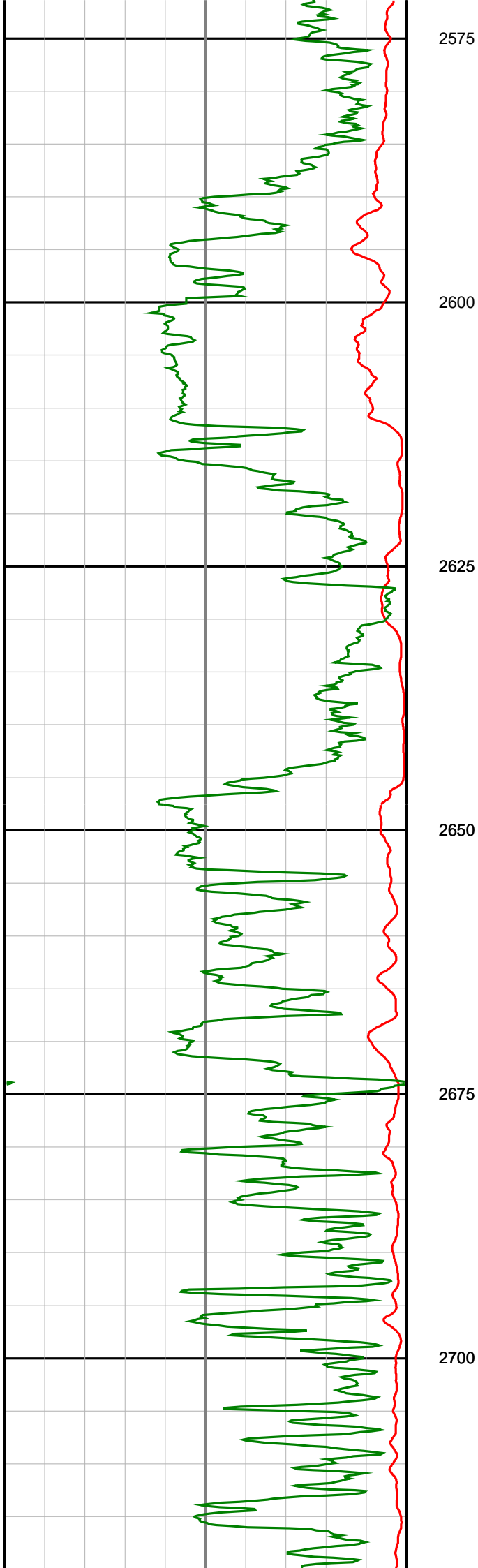
2350

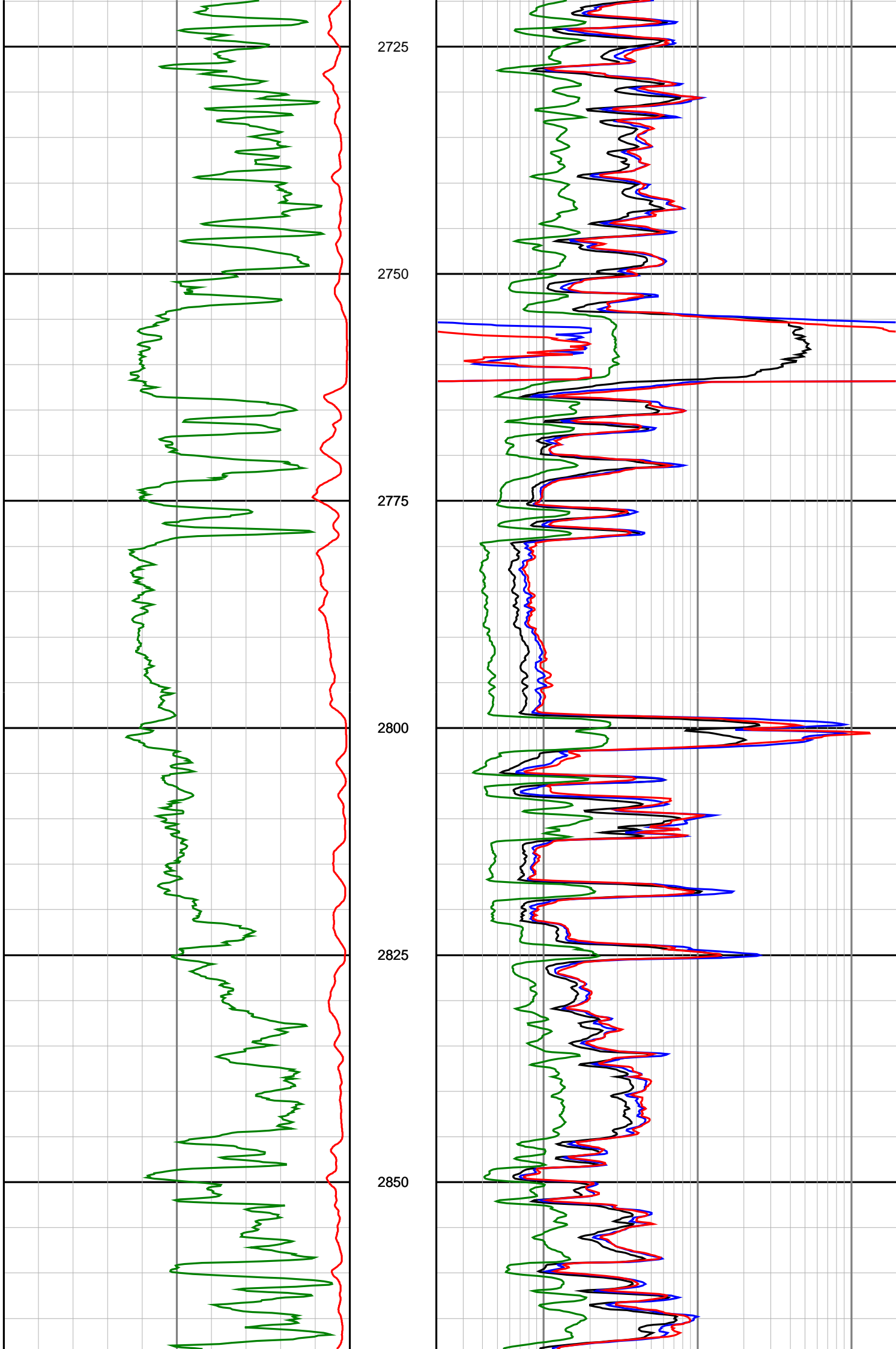
2375

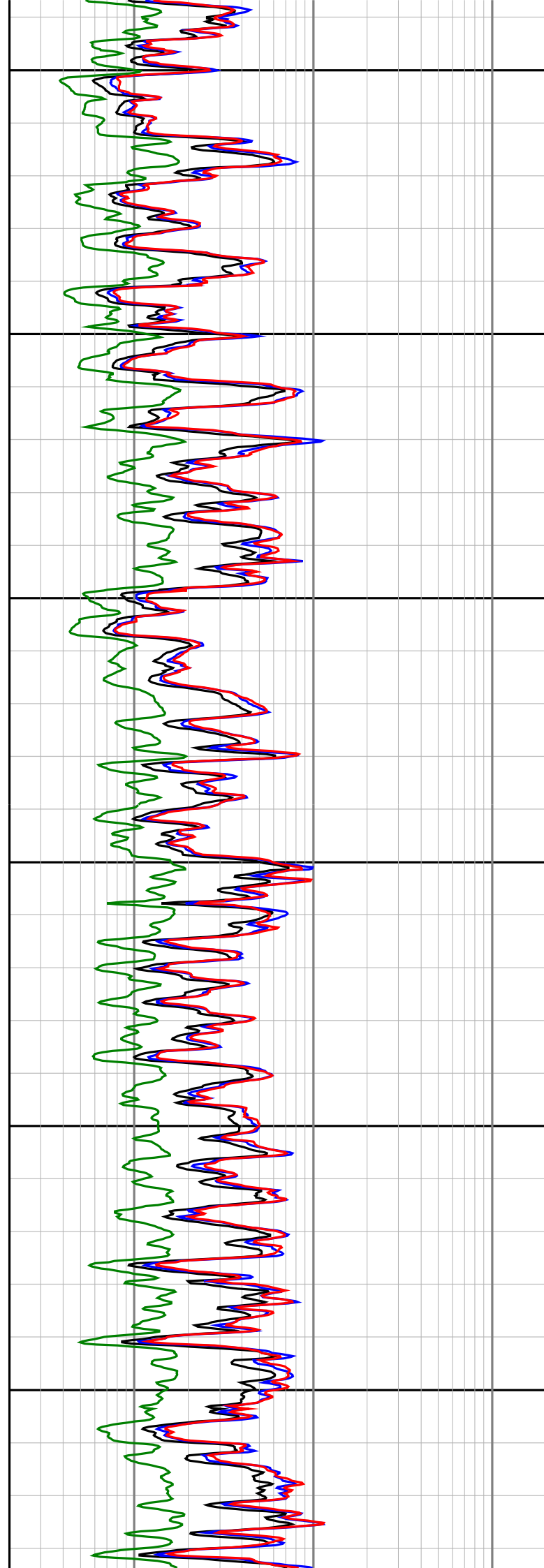
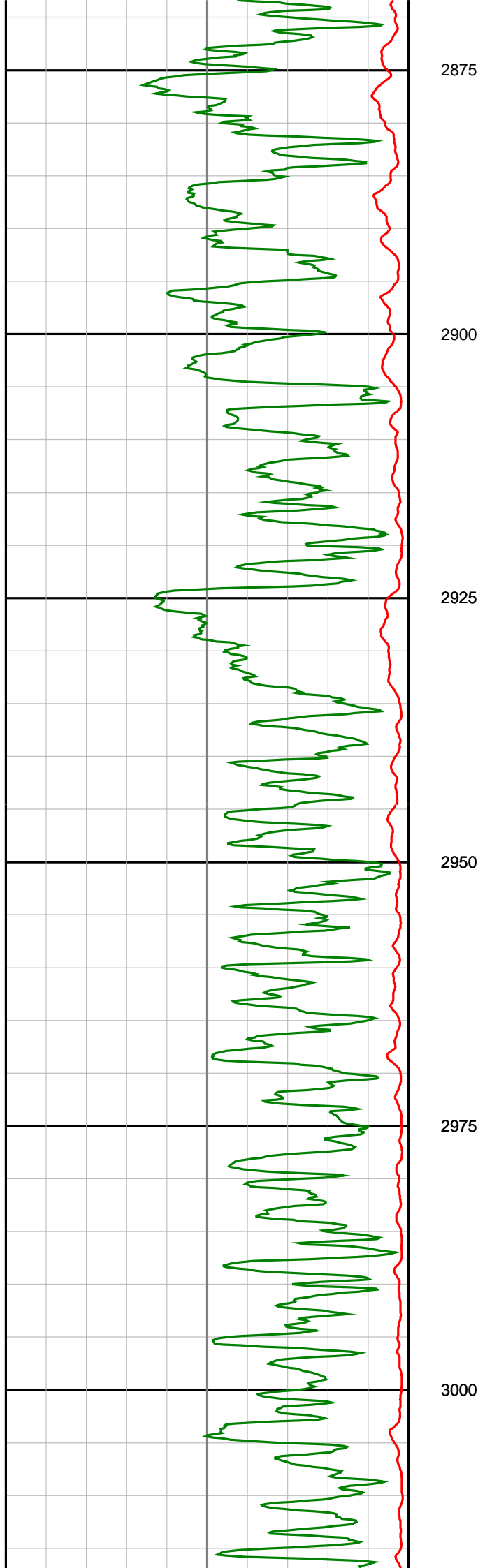
2400

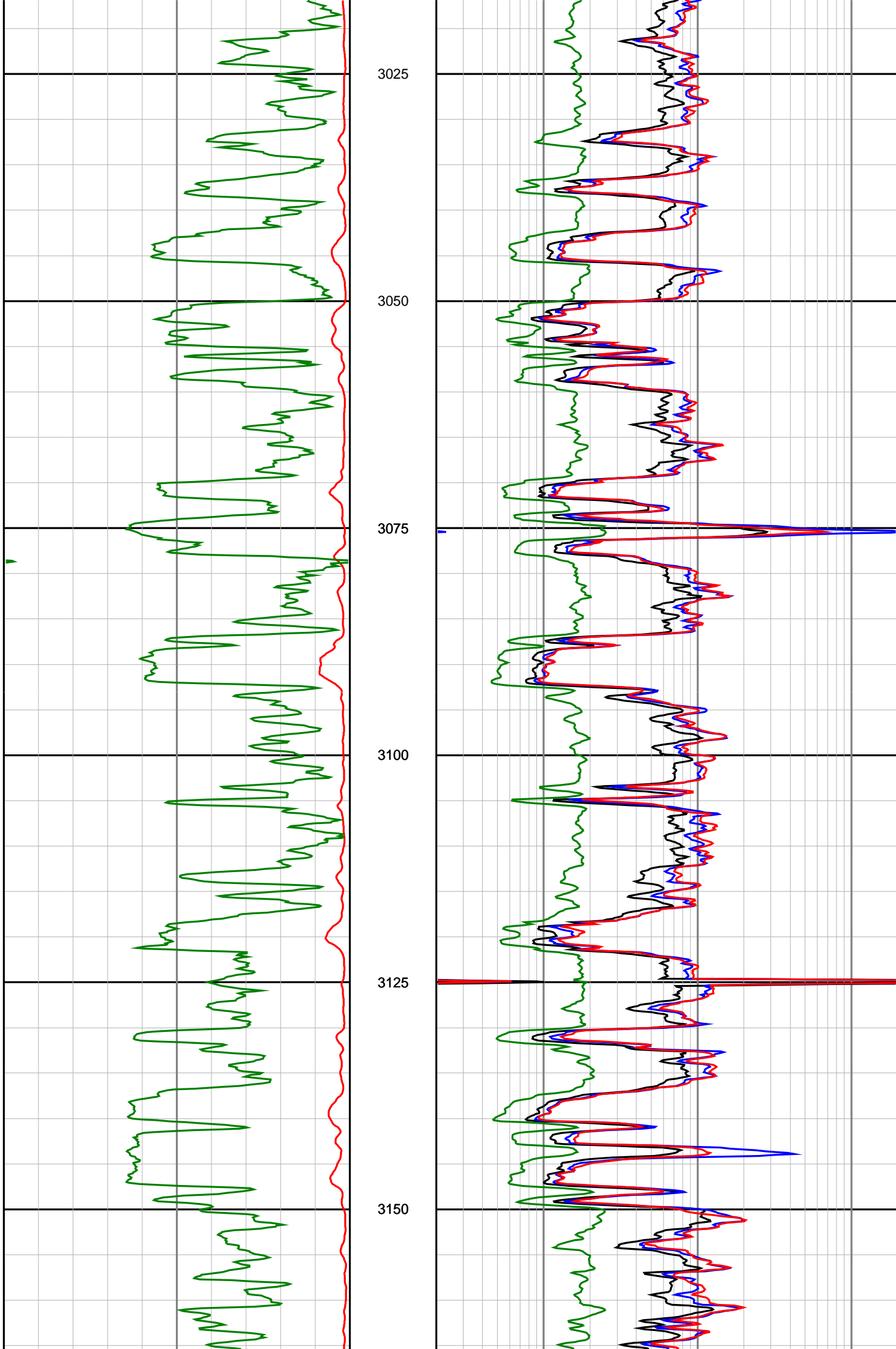


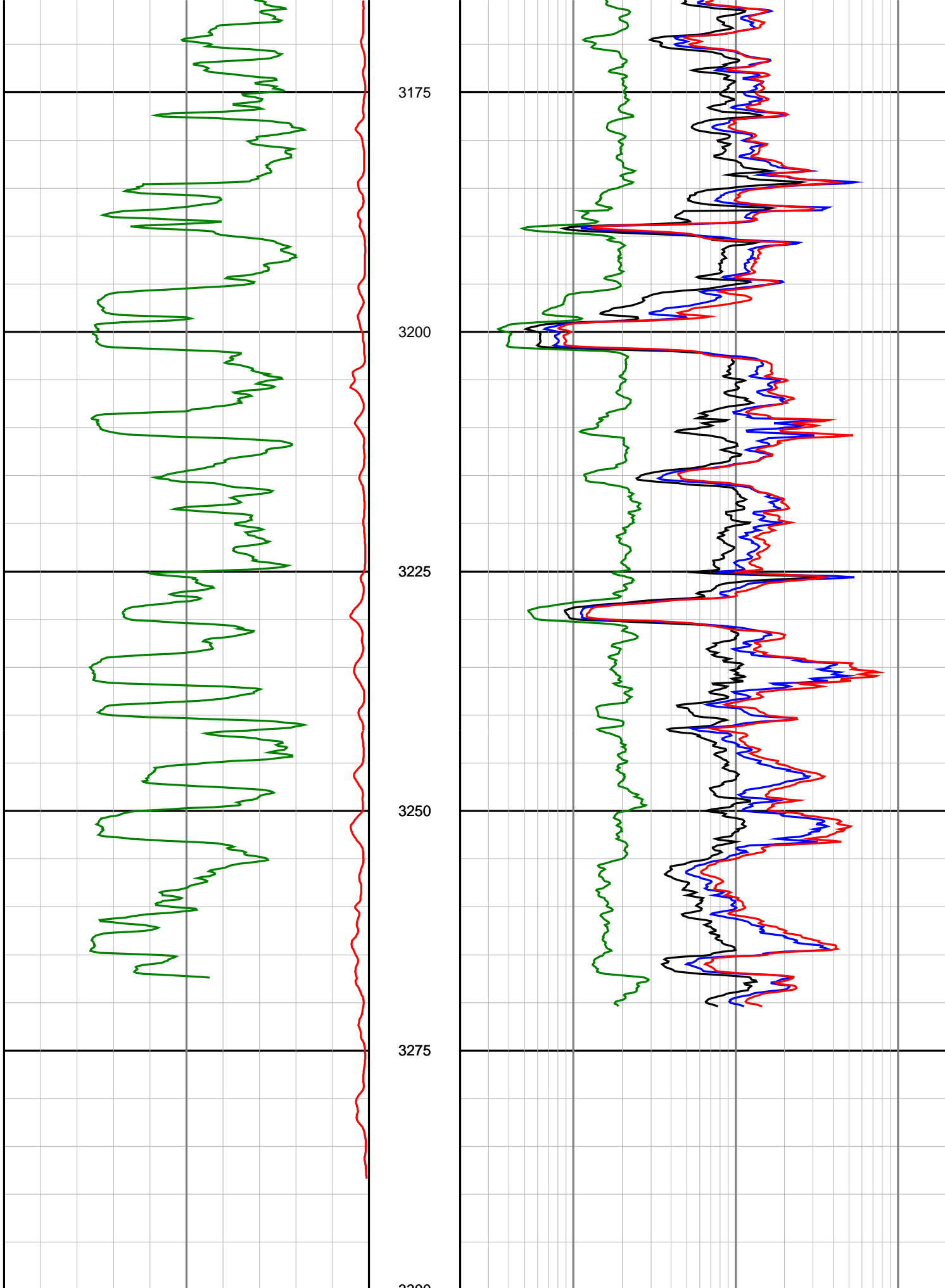












**Gamma Ray
(SGRC)**
api

**Depth
MD**
1:500

**Ext Shallow Phase Res
(SEXP)**
ohmm

**Rate Of Penetration
(ROP)**

**Shallow Phase Res
(SESP)**

0 200

0.2 200

500

(SRUP)
m/hr

0

0.2

(SESP)
ohmm

200

Medium Phase Res

(SEMP)

ohmm

0.2

200

Deep Phase Res

(SEDP)

ohmm

0.2

200